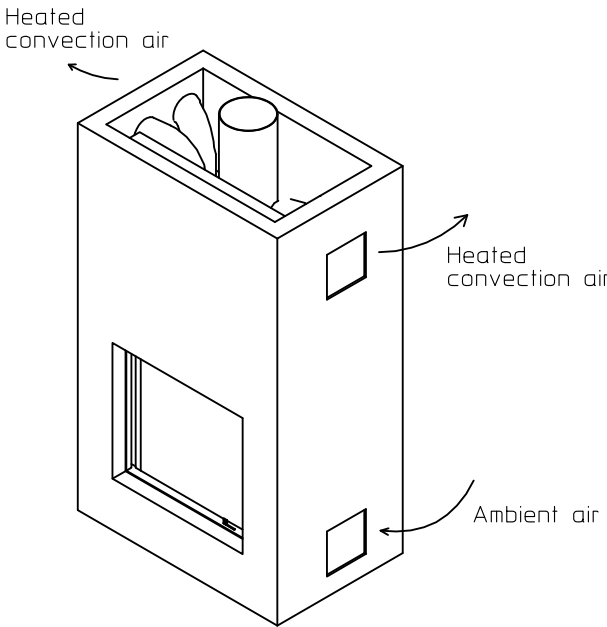
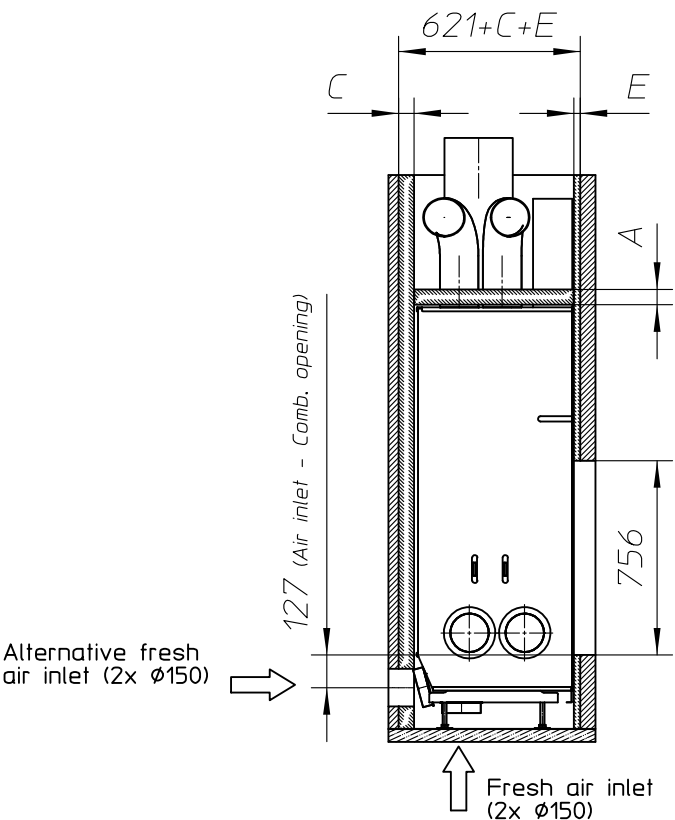
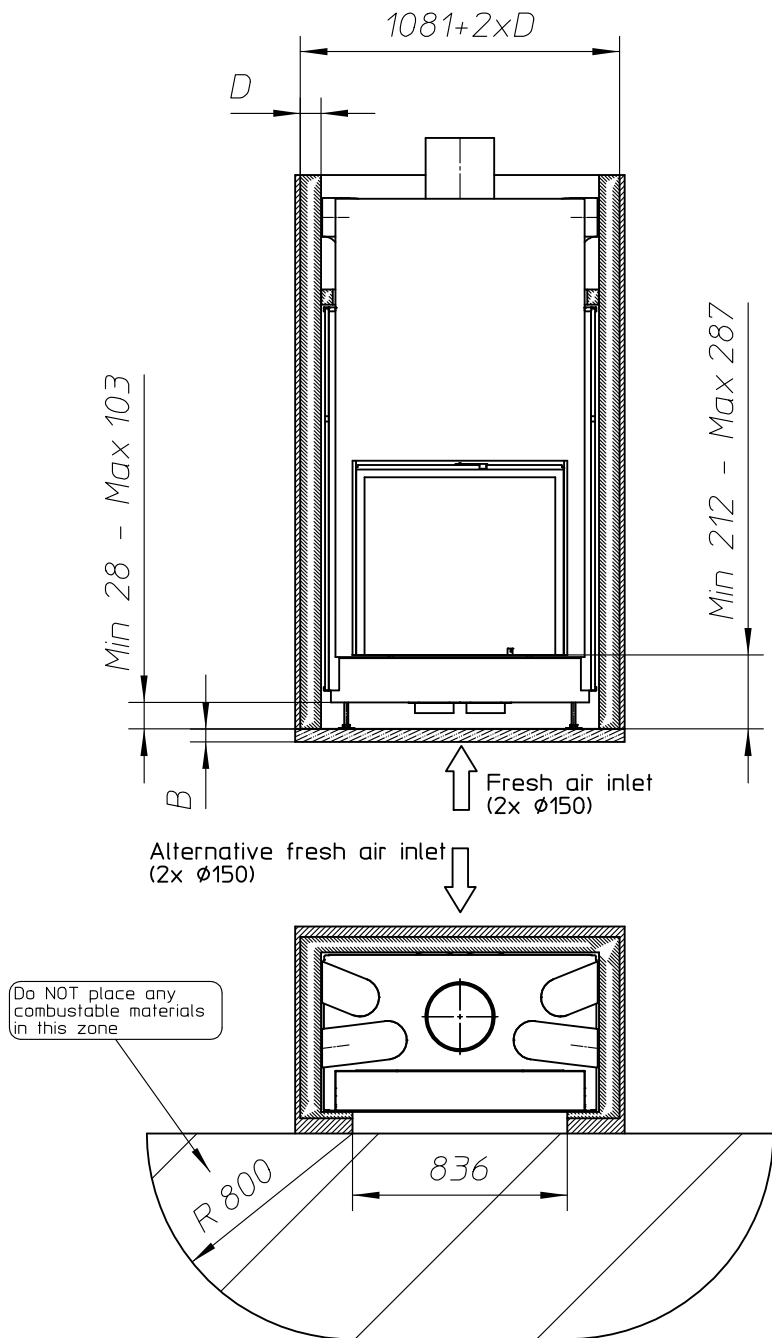


Without finishing frame



ULTIME D Patented

metalfire

Technical Document

ULTIME D MF 800-75 WHE 1S BBQ

- Dimensions (mm)**
- combustion opening WxH: 836x756
 - external WxDxH: 1060x619x2061
 - fresh air: 2xØ150
 - diameter flue: Ø250
- Technical Data**
- capacity: 21.5kW
 - efficiency capacity: 80.1%
 - CO (volume with 13%O₂): 0.08%
 - dust (volume with 13%O₂): 30mg/m³
 - weight: 435kg
 - Air intake to convection: minimum 720cm² (4xØ150)
 - Air exhaust to convection: minimum 720cm² (4xØ150)

Table: prescribed insulation thickness (mm)

Combustable finishing material					
	A	B	C	D	E
Test report (TC = 0,14 W/mK)	102	NC	98	133	40
Metalfire recommended Promasil 1100L (TC = 0,081 W/mK)	60	NC	60	80	25
Non-combustable finishing material					
non-combustable materials (structural building items EXCLUDED e.g. load bearing walls)	0	0	0	0	0
TC = thermal conductivity NC = non-combustable					

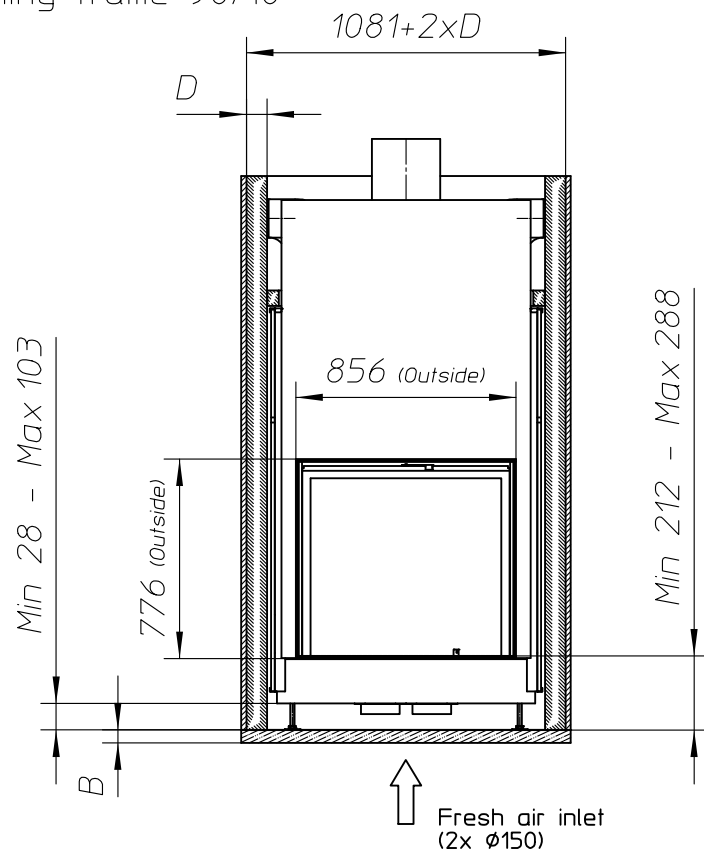
First aid and technical support:

- support@metalfire.eu
- +32 (0)9 261 51 90

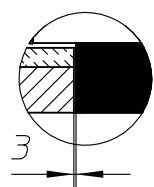
scale 1:25	Rev.
www.metalfire.eu EN 13229	CE
General dimensional tolerances up to 6mm Metalfire preserves the right to modify specifications without previous notice	Sheet 2/5

- Combustable finishing material
- Non-combustable finishing material
- Insulation
- Insulation thickness => see table

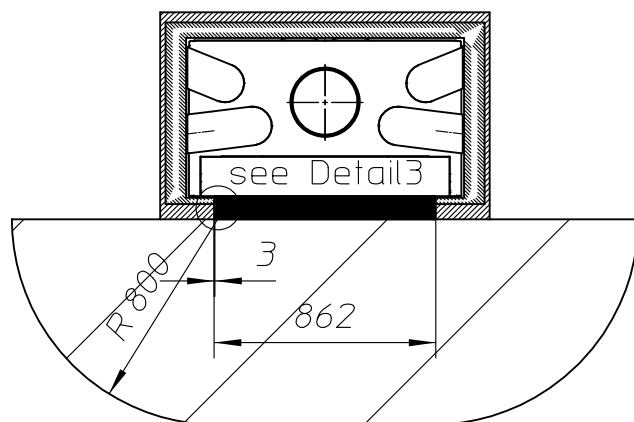
With finishing frame 90/10



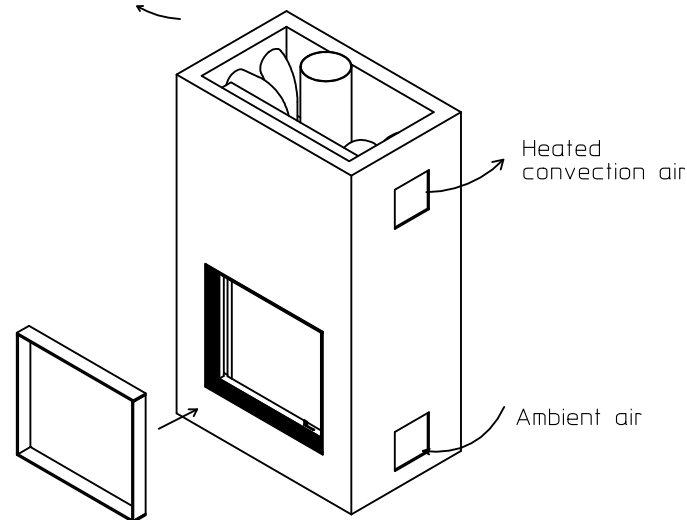
Detail3
Scale 1:10



Alternative fresh air inlet
(2x $\phi 150$)



Heated convection air



ULTIME D Patented

metalfire

Technical Document

ULTIME D MF 800-75 WHE 1S BBQ

Dimensions (mm)

- combustion opening WxH: 836x756
- external WxDxH: 1060x619x2061
- fresh air: 2x $\phi 150$
- diameter flue: $\phi 250$

Technical Data

- capacity: 21.5kW
- efficiency capacity: 80.1%
- CO (volume with 13%O₂): 0.08%
- dust (volume with 13%O₂): 30mg/m³
- weight: 435kg
- Air intake to convection: minimum 720cm² (4x $\phi 150$)
- Air exhaust to convection: minimum 720cm² (4x $\phi 150$)

Table: prescribed insulation thickness (mm)

Combustable finishing material					
	A	B	C	D	E
Test report (TC = 0,14 W/mK)	102	NC	98	133	40
Metalfire recommended Promasil 1100L (TC = 0,081 W/mK)	60	NC	60	80	25
Non-combustable finishing material					
non-combustable materials (structural building items EXCLUDED e.g. load bearing walls)	0	0	0	0	0
TC = thermal conductivity NC = non-combustable					

First aid and technical support:

- support@metalfire.eu
- +32 (0)9 261 51 90

scale 1:25

www.metalfire.eu EN 13229

General dimensional tolerances up to 6mm
Metalfire preserves the right to modify specifications without previous notice

Rev.

CE

Sheet
3/5

- Combustable finishing material
- Non-combustable finishing material
- Insulation
- Insulation thickness => see table

WITH FIRESCREEN - NO FINISHING FRAME

ULTIME D^{Patented}

metalfire

Technical Document

ULTIME D MF 800-75 WHE 1S BBQ

Dimensions (mm)

- combustion opening WxH: 836x756
- external WxDxH: 1151x675x2061
- fresh air: 2xø150
- diameter flue: ø250

Technical Data

- capacity: 21.5kW
- efficiency capacity: 80.1%
- CO (volume with 13%O₂): 0.08%
- dust (volume with 13%O₂): 30mg/Nm³
- weight: 435kg
- Air intake to convection: minimum 720cm²(4xø150)
- Air exhaust to convection: minimum 720cm²(4xø150)

First aid and technical support:

- support@metalfire.eu
- +32 (0)9 261 50 57

scale 1:20

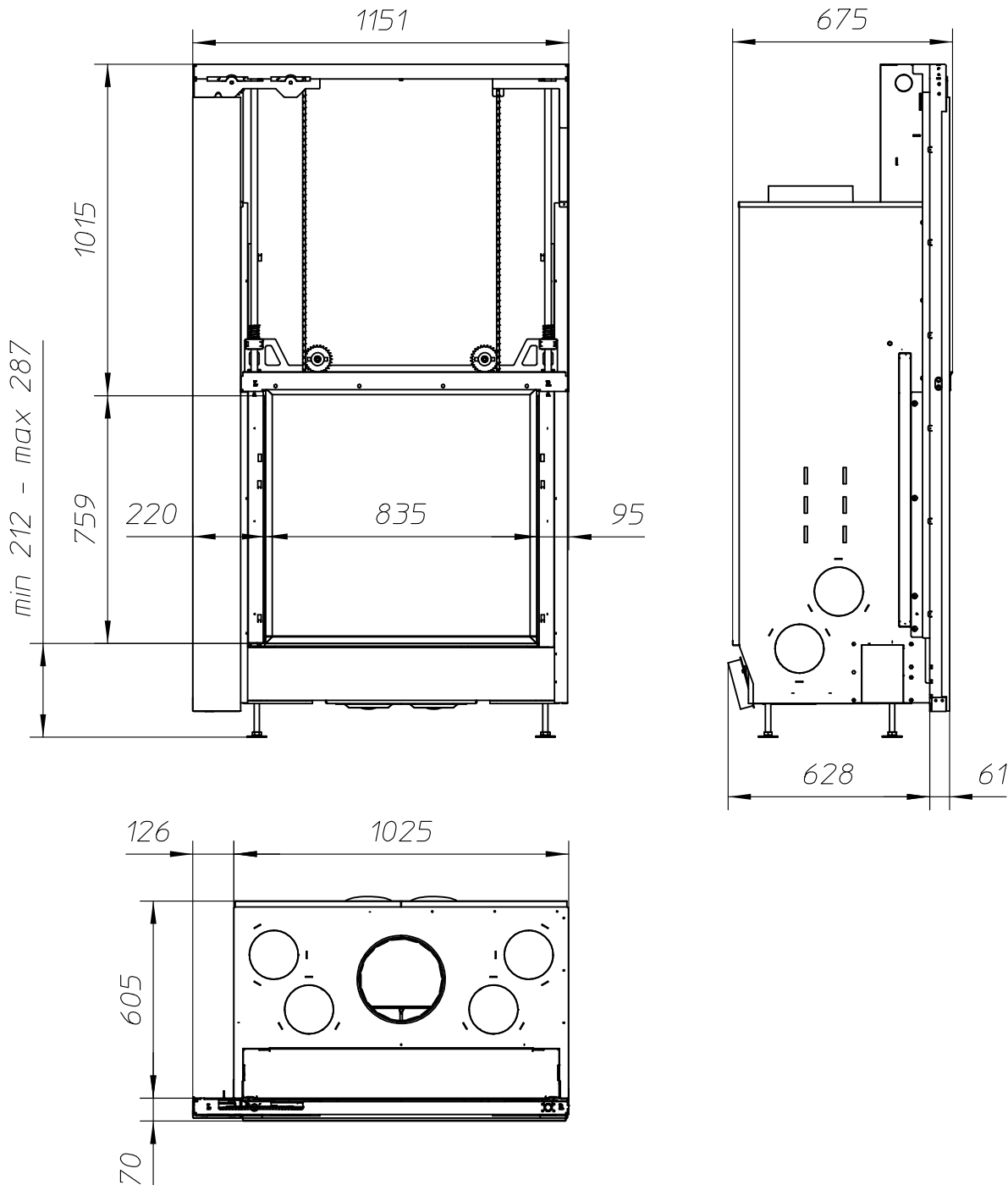
Rev.

www.metalfire.eu EN 13229

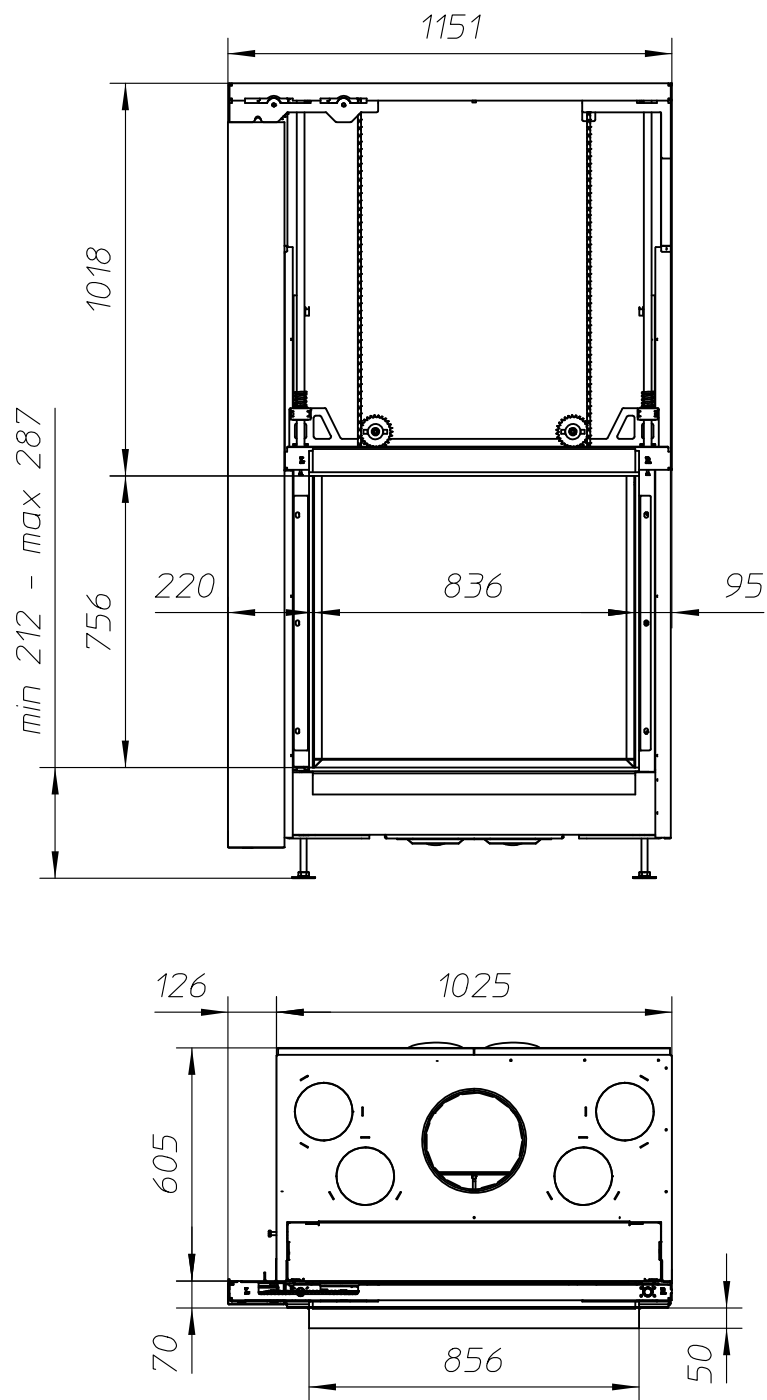
CE

General dimensional tolerances up to 6mm
Metalfire preserves the right to modify specifications without previous notice

Sheet
4/5



WITH FIRESCREEN AND FINISHING FRAME 120/10



ULTIME D_{Patented}

metalfire

Technical Document

ULTIME D MF 800-75 WHE 1S BBQ

Dimensions (mm)

- combustion opening WxH: 836x756
- external WxDxH: 1151x725x2081
- fresh air: 2x \varnothing 150
- diameter flue: \varnothing 250

Technical Data

- capacity: 21.5kW
- efficiency capacity: 80.1%
- CO (volume with 13%O₂): 0.08%
- dust (volume with 13%O₂): 30mg/Nm³
- weight: 435kg
- Air intake to convection: minimum 720cm²(4x \varnothing 150)
- Air exhaust to convection: minimum 720cm²(4x \varnothing 150)

First aid and technical support:

- support@metalfire.eu
- +32 (0)9 261 50 57

scale 1:20

Rev.

www.metalfire.eu EN 13229

CE

General dimensional tolerances up to 6mm
Metalfire preserves the right to modify specifications without previous notice

Sheet
5/5